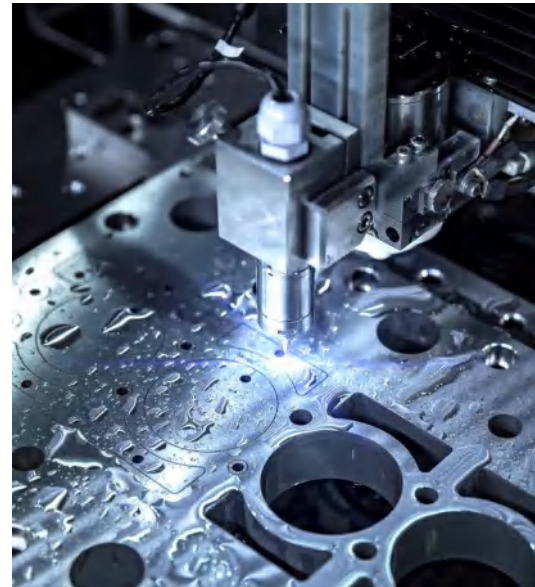


Inovance Company Overview

Your partner for industrial automation solutions



Driven by Technology



AC Drives



MV Drives



AC MultiDrives



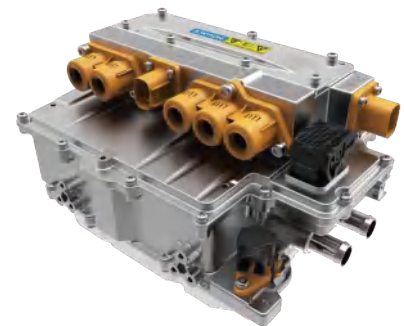
Multi-Axes Servos



Single-Axis Servos



Motion Controllers



Electric Vehicle Inverters



PLCs & HMIs



CNC Machine Tool Solutions

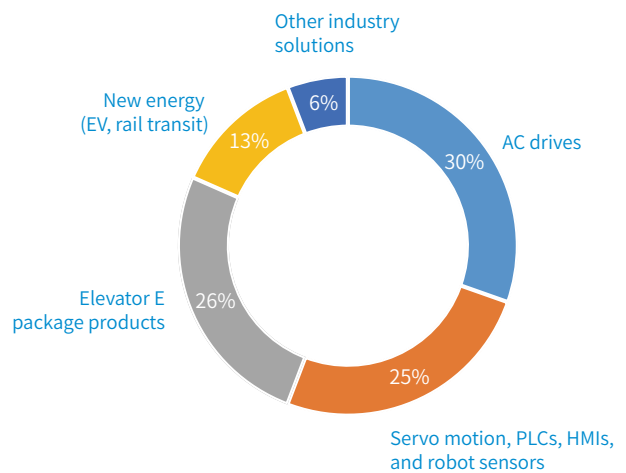
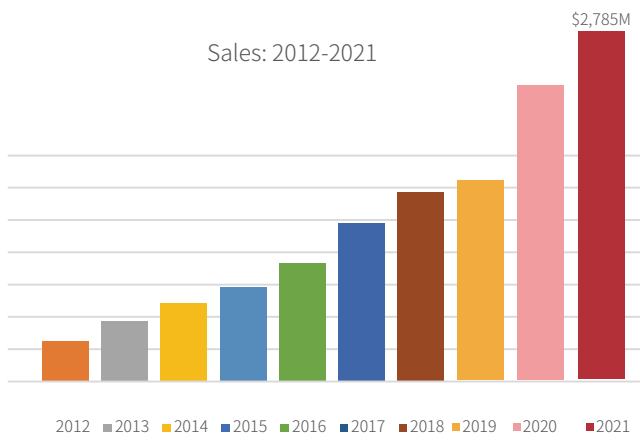


Robotic Solutions

INOVANCE

About Inovance

The Inovance Group, founded in 2003, is a rising star in the global industrial automation business and has revenues of \$2.7bn. The company's flexible production techniques and expert understanding of all industry sectors – from plastics to printing to packaging to iron & steel production – have allowed it to establish globally leading industry-specific business units. Over the years, Inovance has built an engineering team with specialist expertise in industrial automation. This knowledge allows it to form strong partnerships with OEMs and end users, providing ongoing advice about how to get the most out of their automation solutions today, and how to stay prepared for the market and technology changes that are coming in future.



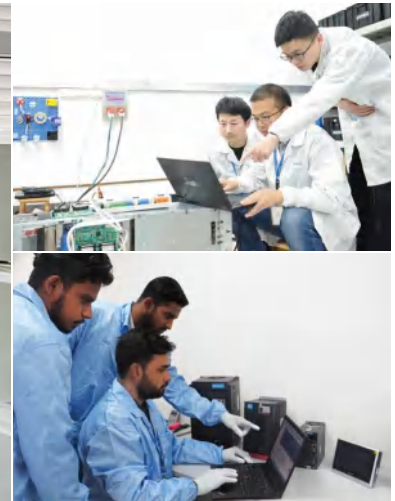
| | | | |
|--|--|---|---|
| <p>2003 founded</p> | <p>IPO:2010 Shenzhen, China</p> | <p>16k 16,938 employees</p> | <p>Global network of offices and distributors</p> |
| <p>\$2.785bn revenues in 2021</p> | <p>No.1 globally in elevator HMIs</p> | <p>#1 in China AC drives for compressors</p> | <p>#1 in China AC drives for plastic injection</p> |

A global business

Inovance is headquartered in Shenzhen, China, and has built a global operation with offices and facilities in Germany, France, Italy, Spain, Turkey, India, and South Korea. Additionally, the company has a strong network of distribution partners around the world.

Worldwide R&D network

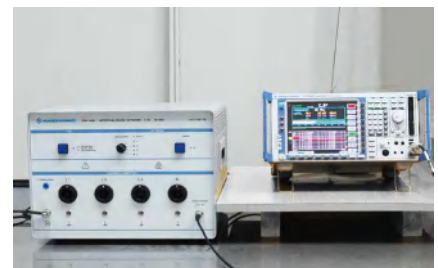
Inovance invests heavily in R&D, enabling the company to continuously release a steady stream of new and innovative products. To ensure that all products meet all key global standards wherever possible, Inovance's R&D teams in Europe, India, and China, all work together seamlessly and virtually on engineering projects. Inovance calls this co-development, and the practice ensures that the best technology knowledge and solutions can be gathered from all around the business; and that they are always implemented and adapted in a way that meets the needs of local markets. The company's commitment to innovation is demonstrated through its headcount: over 20% of Inovance's entire global workforce is in R&D.



Semi-anechoic chamber



EMC surge testing



Conducted emissions testing



Highly accelerated life testing



Climate chamber



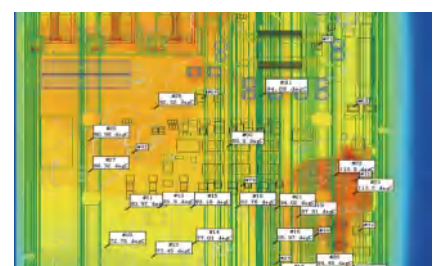
Vibration & shock testing



Motion servo testing



High speed dyno



Thermal simulation

World-class manufacturing

Inovance's advanced global manufacturing facility is ISO 9001 certified and follows continuous improvement principles to achieve world-class standards. Production lines are highly automated, and the company makes use of the latest smart manufacturing techniques and industrial IoT technologies in its own factories. Regular manufacturing assessments and upgrades ensure that the most efficient processes are always in place. Additionally, rigorous inspection techniques ensure world-class quality.

Quality assurance

Inovance uses a uniquely rigorous engineering process that incorporates advanced quality assurance techniques. R&D teams carry out significant integrity testing of all technologies, and the company maintains a world-leading array of in-house testing facilities. These include XYZ vibration test rigs, walk in climate chambers and a highly accelerated life test (HALT) chamber. Inovance also maintains research, EMC and LVD test labs which are certified and accredited by TÜV Rheinland and TÜV Süd according to ISO/IEC 17025 and ISO 9001.

International Certifications

Inovance's products comply with all major international safety certifications and standards, such as CE, UL and EAC. The company works with UL listed test labs and various safety bodies for Type Test certifications, and also participates in UL's Client Test Data Program (CTDP). Meanwhile, Inovance's R&D teams work with leading international testing bodies such as TÜV Rheinland and TÜV SÜD for functional safety. The company is accredited under the Customer Testing Facility (CTF) program run by TÜV Rheinland, as well as the Acceptance of Client Testing (ACT) program run by TÜV Süd.



ISO 9001
ISO 14001

ISO 45001



AOI equipment



Automatic assembly



PCBA automatic testing



Automatic testing



Packaging



Electronic assembly

We Pioneered NICE Integrated Solutions for Elevators

>3,200,000 Installations Worldwide



International Offices



Germany-Stuttgart

Tel: +49 (0) 7144 8990 | sales.de@inovance.eu



Italy-Milano

Tel: +39 (0) 2268 22318 | sales.it@inovance.eu



France-Bordeaux

Tel: +33 (0) 5594 01050 | sales.fr@inovance.eu



Turkey-Istanbul

Tel: +90 (216) 706 17 89 | info@inovance.eu



South Korea-Seoul

Tel: +82 (0) 10 7428 5732 | info@inovance.eu



India

Head Office Chennai | Tel: +91 (0) 44 4380 0201

Ahmedabad | Tel: +91 794003 4272

Mumbai | Tel: +91 22 4971 5883

New Delhi | Tel: +91 11 4165 4524

Sales Network

in Kolkata, Bengaluru, Pune, Coimbatore,

Hyderabad, Vadodara, Jaipur

Email: info@inovance.ind.in

Hong Kong SAR

International Export Office

Tel: +852 2751 6080

info@inovance.eu

For other country distributors,
contact the Hong Kong office.

Inovance Technology Companies

Shenzhen Inovance Technology Co. Ltd.

Suzhou Inovance Technology Co. Ltd.

INOVANCE
www.inovance.eu